

Commissioned Training Programme of COC (A&E), HAHO

11 – 12 Feb 2010 (Thu – Fri) 9a – 5p

Venue : Lecture Theatre, HAHO

Enrolment Hyperlink : - <http://ntwc.home/comas/>

- 1) Enrolment to the Whole 2-Day Conference
(11-12 Feb 2010 Thu-Fri) - all 4 Symposia

http://ntwc.home/comas/course_detail.aspx?cyid=459f4dcb-b249-4e72-a719-39537403cf94

- 2) to Acute Ischemic Stroke Rx Symposium
(11 Feb 2010 Thu AM)

http://ntwc.home/comas/course_detail.aspx?cyid=7518b827-efc7-4762-b50f-813d9d75abbc



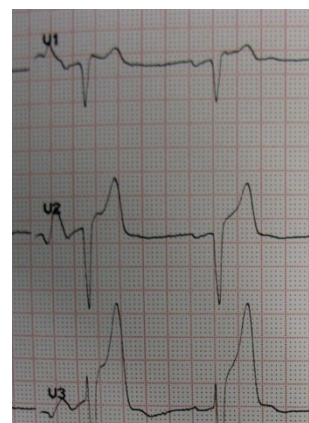
- 3) to Polytrauma Imaging Symposium
(11 Feb 2010 Thu PM)

http://ntwc.home/comas/course_detail.aspx?cyid=edef5dd9-3801-4edf-bf2a-4fa3ad61b065



- 4) to STEMI Reperfusion Rx Symposium
(12 Feb 2010 Fri AM)

http://ntwc.home/comas/course_detail.aspx?cyid=78d2c6fa-28ef-4869-ae1c-6a2f44d92cd8



- 5) to HBO Rx Symposium
(12 Feb 2010 Fri PM)

http://ntwc.home/comas/course_detail.aspx?cyid=5d763e61-fa0b-44e5-a244-9725fd5dfbf2



On behalf of the A&E COC, I take the great pleasure & honour to invite U to attend this EBM Conference on EM, comprising of four Symposia of Therapy of Acute Ischemic Stroke (from IV thrombolysis to IA fibrinolysis), the recent advances of Polytrauma Imaging (from conventional to aggressive), STEMI Reperfusion (extending from pharmacological to endovascular intervention) and Hyperbaric Oxygen Therapy (from myths to science).

The plenary speaker is Prof. Stephen Hayden, Emergency Medicine, University of California San Diego (UCSD), USA. He is also the Associate Dean for Graduate Medical Education of UCSD Medical Center, San Diego and Editor-in-Chief of The Journal of Emergency Medicine (The Official Journal of the American Academy of Emergency Medicine)

There are also many other eminent local speakers of various specialties including Neurology, Radiology, Surgery, Cardiology, Toxicology, Intensive Care, Prehospital Care, Traumatology and Emergency Medicine.

Please kindly refer to the HA Intr-A-net hyperlink to read the Conference details and the enrolment.

Looking forward to your enlightening participation in these 4 multi-disciplinary EBM Symposia to upgrade the patient care !

CW Kam
Chairman,
T&D Subcommittee, COC (A&E)
17 Dec 2009

Hyperlink for enrolment :-

http://ntwc.home/CoMas/course_detail.aspx?cyid=459f4dcb-b249-4e72-a719-39537403cf94

Closing date : 28 Jan 2009

<http://ntwc.home/comas/>

Please remember to read our reply to your HA Intr-A-net e-Box or Login to the CoMaS to check your application status !!!

Programme

Day 1 – 11 Feb 2009

AM Session – Thrombolysis for Acute Ischemic Stroke

Moderators : Dr LP Leung / Dr CW Kam

Discussants : EP / Neurologist / Radiologist

9:00a – 9:30a	Evolution of EBM	Prof Stephen Hayden
9:30a – 10:00a	How to appraise new Therapy ?	Prof Stephen Hayden
10:00a – 10:45a	IV Thrombolysis for Acute Ischemic Stroke	Prof TF Cheung, Medicine, HKU
10:45a – 11:00a	Tea Break	
11:00a – 11:30a	IA Thrombolysis for Acute Ischemic Stroke	Dr R Lee, Neuro-radiology, QMH
11:30a – 12:00n	Time is Neuron – Shortening the Prehosp & ED D2N (Door-to-needle) Time	Dr LH Chiu, A&E, PMH
12:00a – 12:30n	Q&A – All Faculty	
12:45n – 1:45p	Lunch	

PM Session – Diagnostic Imaging for Polytrauma (References AA & BB)

Moderators : Dr WH Yau / Dr CW Kam

Discussants : EP / Surgeon / Radiologist / Traumatologist

2:00p – 2:30p	Critical Appraisal of New Management Approach	Prof Stephen Hayden
2:30p – 3:15p	The Power of MDCT in Polytrauma Imaging	Dr Dickson Tsang, Radiology, QMH
3:15p – 3:30p	Tea Break	
3:30p – 4:15p	Direct Whole-body MDCT Imaging for Polytrauma Vs Conventional Stepwise Imaging (XR, USG & CT)	Dr LF Tang, Surgery, QEH
4:15p – 4:45p	The Best Polytrauma Imaging in USA	Prof Stephen Hayden
4:45p – 5:00p	Q&A – All Faculty	

Programme

Day 2 – 12 Feb 2010 FRI

AM Session – Reperfusion Therapy for STEMI

Moderators : Dr Peter Pang / Dr CW Kam

Discussants : EP / Cardiology / PHEC Ambulance Specialist

9:00a – 9:30a Cost-economics Analysis Prof Stephen Hayden

9:30a – 10:15a PCI for STEMI Dr Michael Lee,
Cardiology, QEH

10:15a – 10:30a Tea Break

10:30a – 11:00n IV Fibrinolytics for STEMI Dr Stephen KM Tam,
Cardiology, YCH

11:00a – 11:30a Time is Muscle - Shortening the Prehosp & ED D2N
(Door-to-needle) & D2B (Door-to-balloon) Time Dr Ralph Cheung,
EM, TMH

11:30n – 12:00n Grading of Evidence & Recommendation Prof Stephen Hayden

12:00n – 12:30n Q&A – All Faculty

12:45n – 1:45p Lunch

PM Session – HBO Therapy (Ref : Cochrane; Weaver)

Moderators : Dr Thomas Au / Dr CW Kam

Discussants : EP / Toxicologist / ICU Specialist / Occupational Med Specialist

2:00p – 2:45p How Evidence-based is HBO ? Prof Stephen Hayden

2:45p – 3:15p HBO Therapy for CO Poisoning in HK Dr YC Chan,
Poison Info Centre, HK

3:15p – 3:30p Tea Break

3:30p – 4:00p Critical Care during HBO Therapy Dr WW Yan,
ICU, PYNEH

4:00p – 4:15p Q&A – All Faculty

4:15p – 4:45p How to sustain & expand EBM practice ? Prof Stephen Hayden